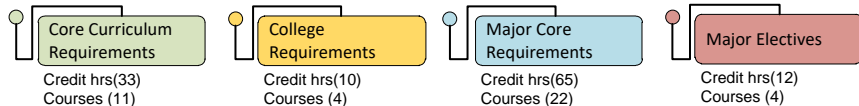
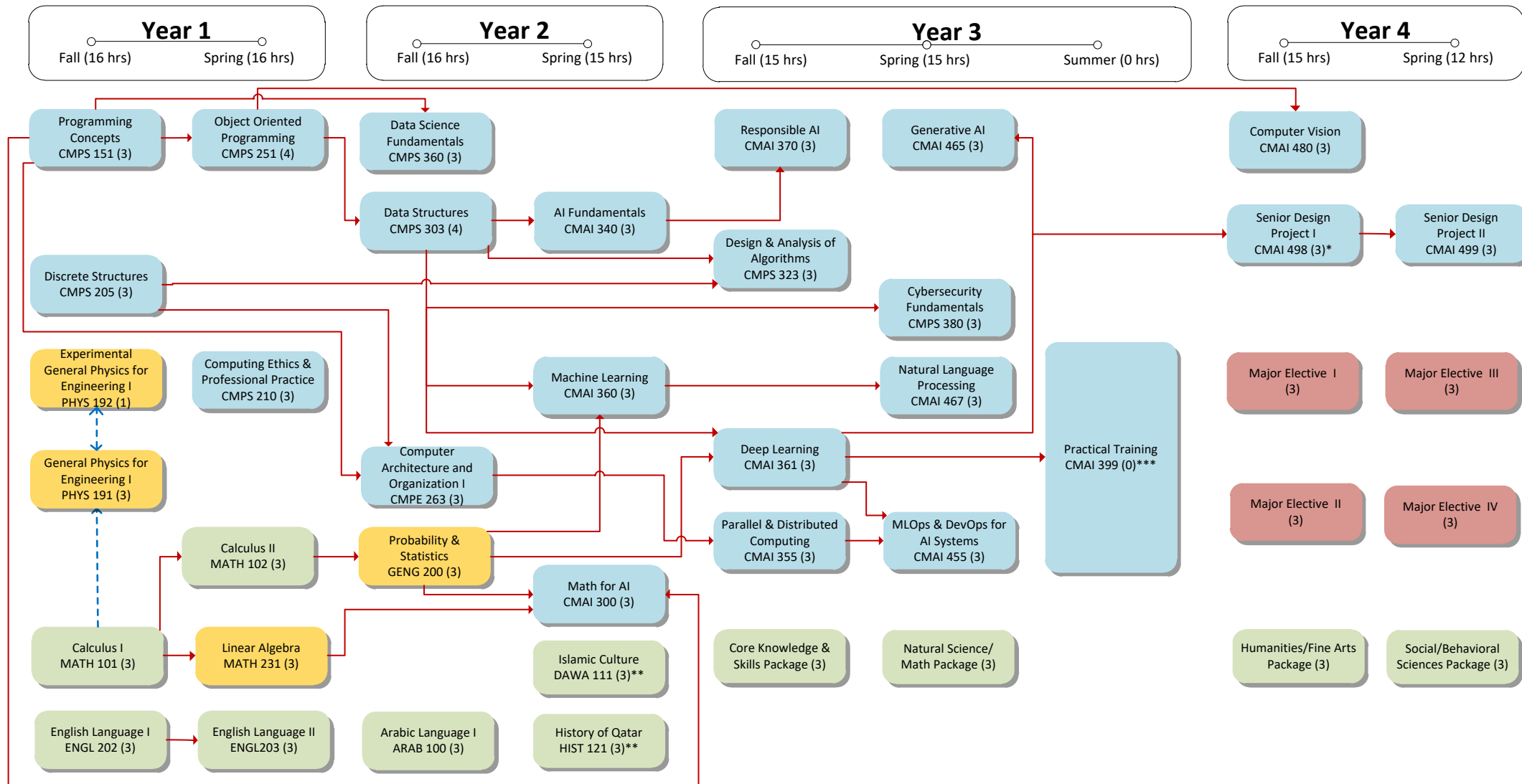


Artificial Intelligence Program Roadmap - 2026

Total Credit Hours : 120
Total No. of Courses : 41

Department of Computer Science and Engineering



Pre-requisites
A prerequisite is a course which must usually be completed in a term earlier than the course for which registration is attempted and prerequisites are being checked.

Concurrent Pre-requisites
The concurrency indicator is used to modify a prerequisite requirement and indicate that the prerequisite course can be taken either in an earlier term or in the same term as the course in which registration is attempted.

* Requires Departmental Approval. Must complete a minimum of 90 CH AND [(CMAI 360 AND CMAI 300) OR CMAI 361]
** Offered both in Arabic and English
*** Requires Departmental Approval. Must complete a minimum of 90 CH AND [(CMAI 360 AND CMAI 300) OR CMAI 361]. Grade is P/F